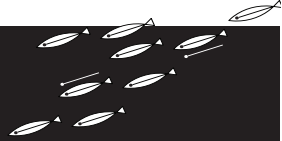


WHALEY'S

DESSERT MENU

DESSERT



- COCONUT MILK PANNA COTTA 9
Bartlett Pears, Cardamom, Passion Fruit Meringue
- LIME CHEESECAKE 9
Poached Peaches, Marcona Almonds
- CHEESE BOARD one for 9 / three for 20 / five for 30
Served with Fig Jam, Almonds, Sea Salt Lavash
Casatica, Buffalo, Semi Firm
Fromager d'Affinois, Cow, Soft
1 Year Aged Manchego, Sheep, Firm
Blackbert "Camembert", Goat, Semi Firm
Blu Di Capra, Raw Goat, Semi Firm

COFFEE & TEA

- DAMMAN FRERES TEA 3
English Breakfast, Mint, Vanilla or Chamomile
- FRENCH PRESS LA COLOMBE COFFEE 12 oz. / 4
Corsica Blend, Colombia 34 oz. / 10

